



MEDICAL RANGE CAREPULP®

Ecofriendly hygiene and care solutions



HEALTH AND PLANET PRESERVATION

OUR MEDICAL PRODUCTS ARE SPECIALLY DESIGNED TO MEET THE NEEDS OF THE HEALTHCARE SECTORS:

ADVANCED INFECTION CONTROL

Single use, disposable products are proven to significantly reduce the risk of cross contamination and infection.

HYGIENIC SYSTEM

- Reduction of staff contact time during use.
- No rinsing and washing needed after use.
- You can simply place the used product in the macerator and it is removed from the healthcare environment.
- The product is reduced to a fine slurry and released directly into the sewage system.

USER FRIENDLY

- Products promote patient independence.
- All our products are stackable and easily separated.
- Patients will find our products easy and comfortable to use.
- Staff will find our products sturdy, solid and reliable.

SAVINGS

- Very low unit cost per product.
- Macerators, in comparison to traditional bedpan washers, enable savings of up to 90% per cycle.
- Reduced infection rates means savings all round.

IMPROVED ENVIRONMENT

- Medical Pulp is biodegradable.

Expert in moulded fibre, Omni-Pac Group brings its knowledge and expertise to the medical sector: to professionals and patients, offering the CarePulp® range.

To ensure hygienic and safe environment, all our products are tested in accordance with PAS29:1999 for water retention and maceration in a healthcare environment. Our solutions are professionally designed to provide comfortable and easy-to-use solutions. Staff will find the solutions sturdy and leak proof for a minimum 4 hours.

Recognised quality

A unique and perfectly managed procedure that has forged Omni-Pac Group reputation for very high quality solutions.

Our factories are:



ISO 9001 certified for their organisation,



BRCGS for food safety,



FSC for responsible management of fibre as a natural resource.

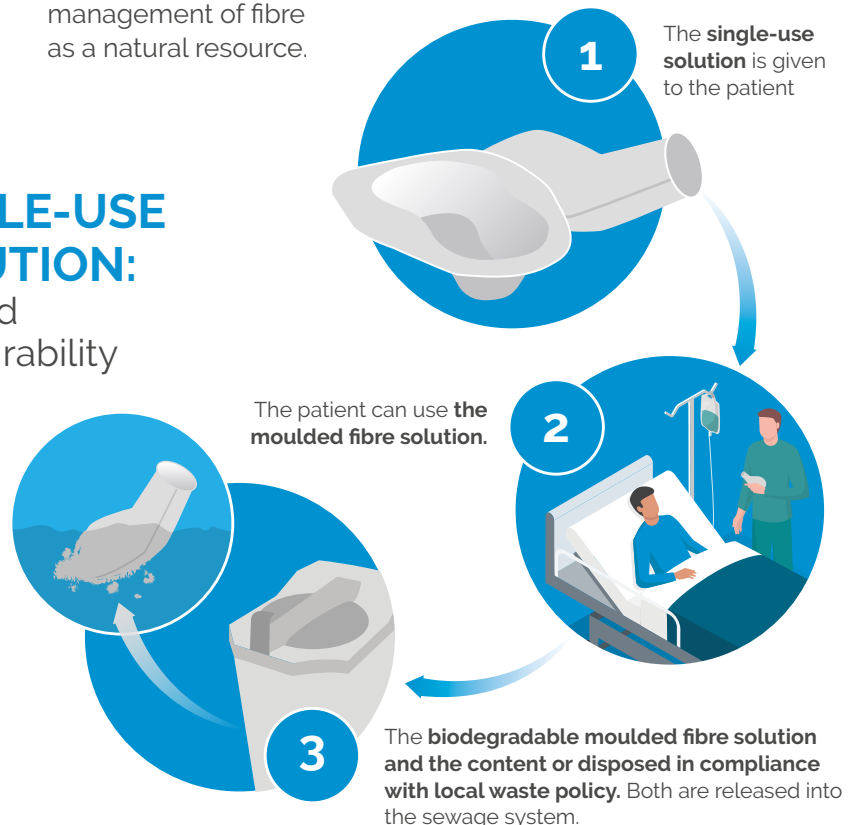
Why promoting the single use?

A single-use disposable system is the most simple and effective way to reduce the risk of healthcare acquired infections.

Our medical solutions are suited for use in hospitals, clinics, nursing homes and other healthcare settings.

SINGLE-USE SOLUTION:

use and biodegradability



CAREPULP® : CARE SOLUTIONS

The CARETAINER® receptacles are used for carrying medical devices and woundcare. This line of solutions offers different dimensions to meet medical staff's needs on a daily-basis.

The jug is used to measure fluid collection, up to 1 litre.

REFERENCE	PRODUCT DIMENSIONS IN MM	NB OF PRODUCTS / BUNDLE	BUNDLE DIMENSIONS IN MM - L X W X H	NB OF BUNDLE / PALLET	NB OF PRODUCTS / PALLET	PALLET DIMENSIONS IN MM - L X W X H	COLOUR
CareTainer® 25	143 x 111 x 28	1 320	596 x 396 x 342	32	42 240	1 200 x 800 x 2 880	grey
CareTainer® 33	198 x 140 x 35	840	596 x 396 x 402	12	10 080	1 200 x 800 x 2 688	white
CareTainer® 35	215 x 143 x 43	840	766 x 341 x 437	18	15 120	1 200 x 800 x 2 766	white
CareTainer® 65	180 x 90 x 22	1 240	676 x 376 x 369	21	26 040	1 200 x 800 x 2 727	white
CareTainer® 70	180 x 135 x 22	1 200	756 x 396 x 417	18	21 600	1 200 x 800 x 2 646	white
CareTainer®73	225 x 136 x 22	840	576 x 396 x 462	24	20 160	1 200 x 800 x 2 916	white
CareTainer® 75	260 x 135 x 22	450	766 x 270 x 422	12	5 400	1 200 x 800 x 2 808	white
CareTainer® Chip A	179 x 135 x 30	870	791 x 376 x 414	18	15 660	1 200 x 800 x 2 628	white
MEASURING JUG	252 x 185 x 110	100	890 x 290 x 890	24	2 400	1 200 x 1 000 x 1 028	grey



Ref: Caretainer® 65



Ref: Measuring Jug



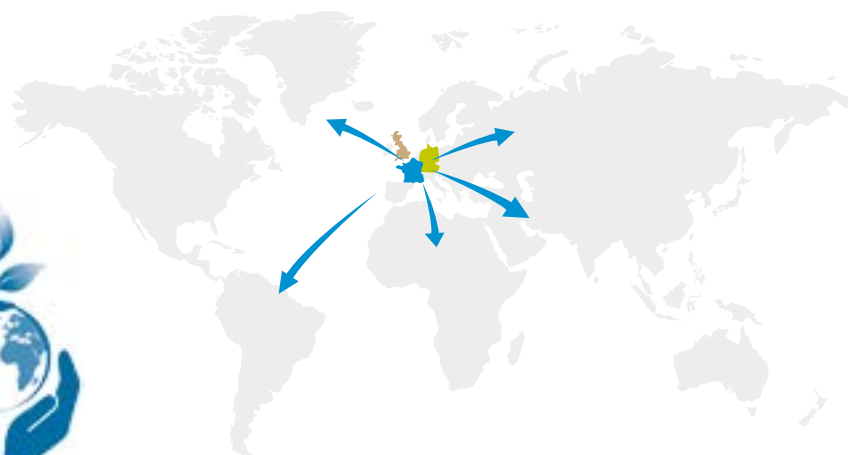
Ref: Caretainer® 75

OMNI-PAC GROUP OVERSEAS

We believe that environmental solutions have no borders and we are happy to already provide our moulded fibre packaging and hygiene solutions in over 50 countries. Wherever you may be, our solutions are here for you.



ACT NOW!





Omni-Pac Group offers 7 hygiene solutions to ensure security, comfort and an independent toileting experience. The bedpan, the 2 slipper pans and the male urinal bulbous can easily be used by patients on their own to maintain privacy and dignity. Nursing staff will embrace the ease-of-use and time-saving elements by using our products. Solutions are easy to use to use for less mobile patients. The SAMPLE CUP can be used for urine collection or be used as washbasin for premature babies.



Ref. maxi slipper pan



Ref. oblong bedpan



Ref. WASHBOWL



Ref. SAMPLE CUP

REFERENCE	PRODUCT DIMENSIONS IN MM	CAPACITY	NB OF PRODUCTS / BUNDLE	BUNDLE DIMENSIONS IN MM	NB OF BUNDLE / PALLET	NB OF PRODUCTS / PALLET	PALLET DIMENSIONS IN MM - L X W X H	COLOUR
MIDI SLIPPER PAN	340 x 300 x 70.5	1 500 ml	200	604 x 498 x 352	12	2 400	1 200 x 1 000 x 1 200	grey
MAXI SLIPPER PAN	376,3 x 281,3 x 79,3	2000 ml	200	569 x 498 x 387	12	2 400	1 200 x 1 000 x 1 320	grey
OBLONG BEDPAN	352 x 278 x 86.2	2 000 ml	160	568 x 498 x 363	12	1 920	1 200 x 1 000 x 1 240	grey
WASHBOWL	362 x 255 x 110	4 000 ml	100	550 x 380 x 435	10	1 000	1 200 x 1 000 x 1 030	grey
COMMUNE BOWL	270 x 270 x 100	1 700 ml	200	278 x 248x 626	16	3 200	1 200 x 1 000 x 1 432	grey
MALE URINAL BULBOUS	260 x 130 x 100	875 ml	100	890 x 260 x 890	5	500	1 200 x 1 000 x 1 028	grey
SAMPLE CUP	60 X 168 X 90	300ml	200	180 x 400 x 560	36	7 200	1 200 x 1 000 x 1 770	grey



These 3 solutions are specifically designed for fluid collection. The CareBowl® solution is specifically designed to contain liquids. Good to know, the CareBowl can be hold against a patient's body.

This versatile solution can also be used for carrying small medical items, such as dressings. The LARGE BOWL can be used for bedbath with water only.



Ref. CareBowl® L



Ref. GP Bowl

REFERENCE	PRODUCT DIMENSIONS IN MM	CAPACITY	NB OF PRODUCTS / BUNDLE	BUNDLE DIMENSIONS IN MM	NB OF BUNDLE / PALLET	NB OF PRODUCTS / PALLET	PALLET DIMENSIONS IN MM - L X W X H	COLOUR
CareBowl® L	252 x 150 x 46	700 ml	300	606 x 400 x 262	40	12 000	1 200 x 800 x 2764	white / grey
CareBowl® XL	253 x 146 x 44	750 ml	320	590 x 401 x 255	20	6 400	1 200 x 800 x 1 430	grey
GP BOWL	195 x 195 x 82	1000 ml	200	595 x 207 x 404	30	6 000	1200 x 1000 x 1400	grey
LARGE BOWL	290 x 290 x 100	3000 ml	100	297 x 295 x 624	24	2400	1200 x 1000 x 1428	grey

PRESERVING HEALTH AND THE PLANET

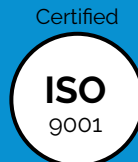
Find all our solutions on [omnipacgroup.com](https://www.omnipacgroup.com)

Rue Pierre Clugnet
F - 56350 Allaire
Phone +33 (0) 2 99 71 95 22

An der Kaje 1
D - 26931 Elsfleth
Phone +49 (0) 44 04 98 74-0

Second Avenue,
Flixborough Industrial Estate
Scunthorpe,
UK - North Lincolnshire DN15 8SD
Phone +44 (0) 1724 847 207


OMNI-PAC GROUP
The natural choice



The mark of responsible forestry